



Scan on your Mobile Device
to get your Digital Brochure



cornerstone
triple section



Moduline



Proudly Built in Canada
www.modulinepenticton.ca

Moduline Manufactured Homes

Cornerstone Series Triple Sections

Standard Features and Specifications

GENERAL CONSTRUCTION

- Built to CSA A-277 (Zone 4 & 5)
- Maintenance Free Vinyl Lap Siding
- White Wooden Fascia
- Architectural Shingle Roof (30 yr. Warranty)
- 4/12 Roof Pitch
- Perimeter Vented Eaves
- Textured Drywall Ceiling
- Vinyl Covered Drywall Panel Throughout
- Residential 2x4 Interior Walls
- 8' 2 x 6 Exterior Walls
- Engineered Floor Trusses @ 19.2" O.C
- 5/8" T&G Decking
- Decorative Insulated Entry Doors with Dead Bolt and Peephole (36" Front & 32" Rear)
- Decorative Exterior Light at all Entrances (Except Porches)
- Residential Maintenance Free Double Glazed
- Low E with Argon, PVC Windows w/Vinyl Sills,
- Screens & Security Locks
- Exterior GFI Electrical Outlet
- Exterior Frost Free Tap
- 94 psf Ground Snowload
- Insulation Meets or Exceeds Regional Codes
- 4' or 6' Covered Porch w/Gable Roof (Select Models)

BRIGHT, BEAUTIFUL KITCHENS

- European Deluxe Cabinetry w/ Crown Moulding (Most Cabinets)
- Kitchen Island (Plan Specific)
- Extended Overhead Fridge Cabinet
- Stepped Kitchen Cabinets (Plan Specific)
- Ceramic Tile Backsplash
- Window Over Kitchen Sink (Plan Specific)
- Chrome Single Lever Faucet w/Pull out Spout
- Deluxe 30" Electric Range
- Exterior Vented Range Hood with Light
- 18 cu ft, 2-door, Frost Free Refrigerator
- Double Stainless Steel Kitchen Sink
- Bump-Out At Kitchen Sink (Plan Specific)
- Corner Walk-In Pantry In Kitchen

TASTEFUL INTERIORS

- Carpet in Living Room, Master Bedroom & Hall
- Quality Cushioned Linoleum Flooring in all Other Areas
- Residential-Style Closet Doors
- 2" Horizontal Blinds on all Windows (excluding bath)
- 8' Flat Ceilings Throughout
- Designer Glass Light Fixtures
- Pre-finished Interior Passage Doors
- Double Rod in Master Bedroom Closet

UTILITY SERVICES

- Shut Off Valves under Kitchen and & Bath Sinks
- 100 Amp Electrical Service
- 95% High Efficiency Gas Furnace w/Electronic Ignition, AC Ready
- 40 Gallon Electric Water Heater
- Wired, Plumbed and Vented for Washer and Dryer
- Utility Room Shelf
- Continuous Whole House Fan
- Smoke Detector(s)
- (3) Communication Outlets Kitchen, Living Room and MBR
- Freezer Plug (Plan Specific)

Ten Year Warranty

Square footage and room sizes are approximate.
Due to our policy of progressive product improvements, all prices and specifications are subject to change without notice.

Reduced Risk

Modular construction uses the same quality materials as site-built structures, but since 80% of the structure is built and inspected off-site, the amount of time required for on-site construction is dramatically reduced. Less construction on-site reduces the chance of weather delays, material damage and mold contamination. Security issues related to theft are also reduced.

Reduced Cost

Fewer subcontractors means fewer headaches and reduces your on-site supervision costs, as well as often overlooked costs, such as waste removal and insurance costs.

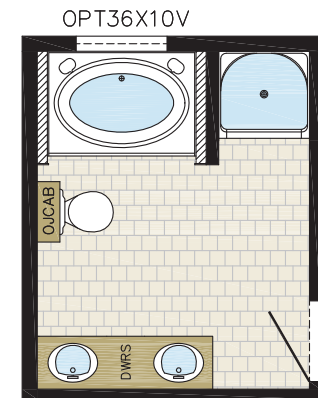
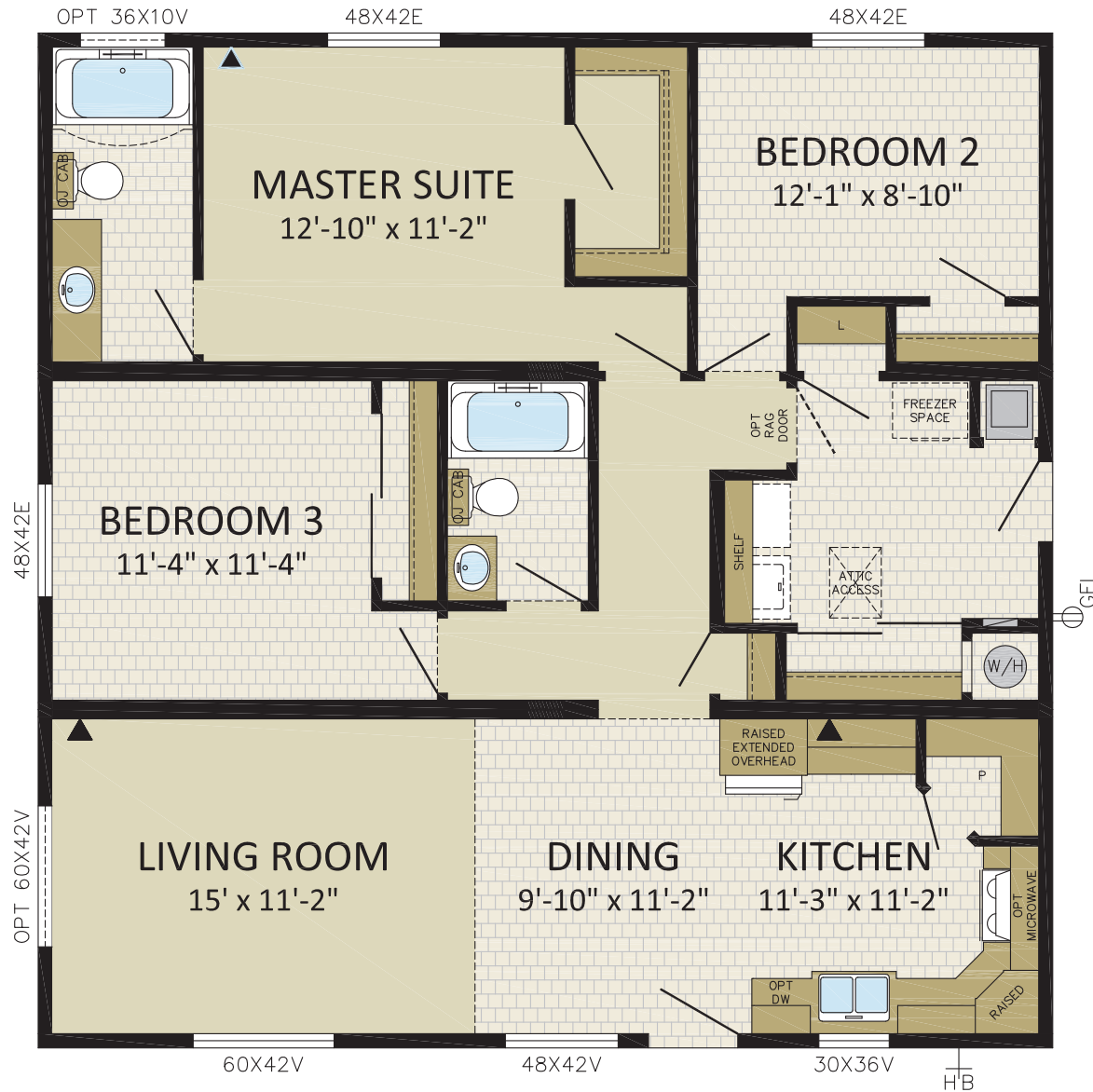
Build Green

Modular construction earns points from most major Green accrediting agencies for use of recycled materials, tight building envelopes, waste reduction, and innovative building practice.



RUBEN

3 BDRM, 2 BATH | 36'x36' | 1296sqft | 40CO3601



**OPT
DELUXE BATH**
(4'-0" STRETCH OPTION
ALSO REQUIRED)



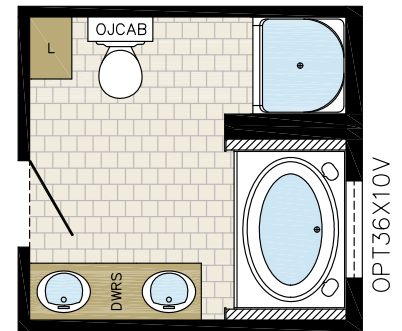


Model 40CO3601 is shown with Options:

- * 3/4 Star Light Exterior Door
- * 5/12 Roof Pitch with Double Dormer
- * Stone work by others
- * Wolfe Creek Windows
- * Web in Dormer
- * Garage by others

RADFORD

2 BDRM, DEN, 2 BATH | 37'6"x40'/36' | 1452 sqft | 40CO4001





Rear View

Model 40CO4001 above is shown with Options:

- *3/4 Modena Exterior Door with 3/4 Modena Side Light
- *Painted Fiber Cement Siding
- *Wolfe Creek and optional Windows
- *8' Porch on Rear with optional Patio door (as shown above)
- *Garage Built by Others

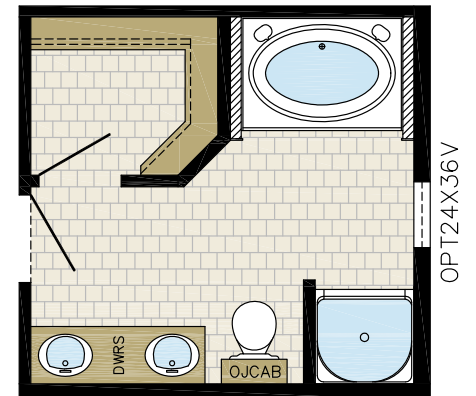
ROWAN

2 BDRM, DEN, 2 BATH, COVERED PORCH

36'x42'/40' | 1464 sqft | 40CO4201



OPT DELUXE BATH





Model 40CO4201 above is shown with Options:

- *6/12 Roof Pitch with Double Dormers (Installed on site)
- *Full Light Exterior Door c/w Full Light Side Light
- *Painted Horizon Siding
- *Optional Upgrade Windows
- *Garage Built by Others





Model 40CO4801 above is shown with Options:

- *Modena Exterior Door
- *Box Bays
- * Painted Shakes in Box Bays
- *Optional Upgraded Windows
- * Porch by others

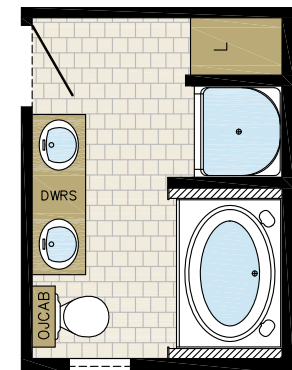


RAINIER

3 BDRM, 2 BATH, COVERED PORCH
39'8"x49' | 1944 sqft | 40CO4901



OPT
DELUXE BATH



OPT 24X36V



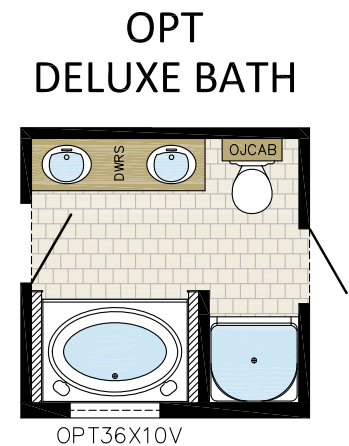
Model 40CO4901 above is shown with Options:

- * 3/4 Star Light Exterior Door c/w 3/4 Star Side Light
- * Painted Fiber Cement Siding & Optional Web in Gable
- * 6/12 Roof Pitch
- * Optional Upgrade Windows
- * Stone by others
- * Garage Built by Others



2 BDRM, DEN, 2 BATH, COVERED PORCH
39'8"x37'/52' | 1763 sqft | 40CO5001

2 BDRM, DEN, 2 BATH, COVERED PORCH
39'8"x37'/52' | 1763 sqft | 40CO5001





Model 40CO5001 above is shown with Options:

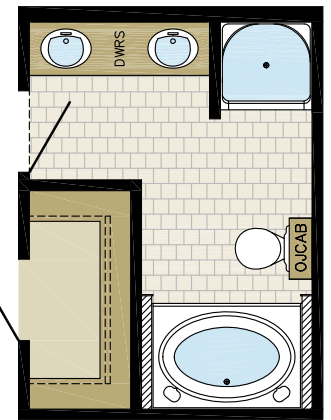
- * Modena Full Light Exterior Door c/w 2 Modena Full lights
- *5/12 Hip Roof
- *Painted Fiber Cement Siding
- *Optional Upgrade Windows
- *Box Bay with Vertical Siding
- *Stone and Garage by Others



REMY

3 BDRM, 2 BATH, COVERED PORCH

39'x50'/46'/27' | 1620 sqft | 40CO5002



OPT
DELUXE BATH



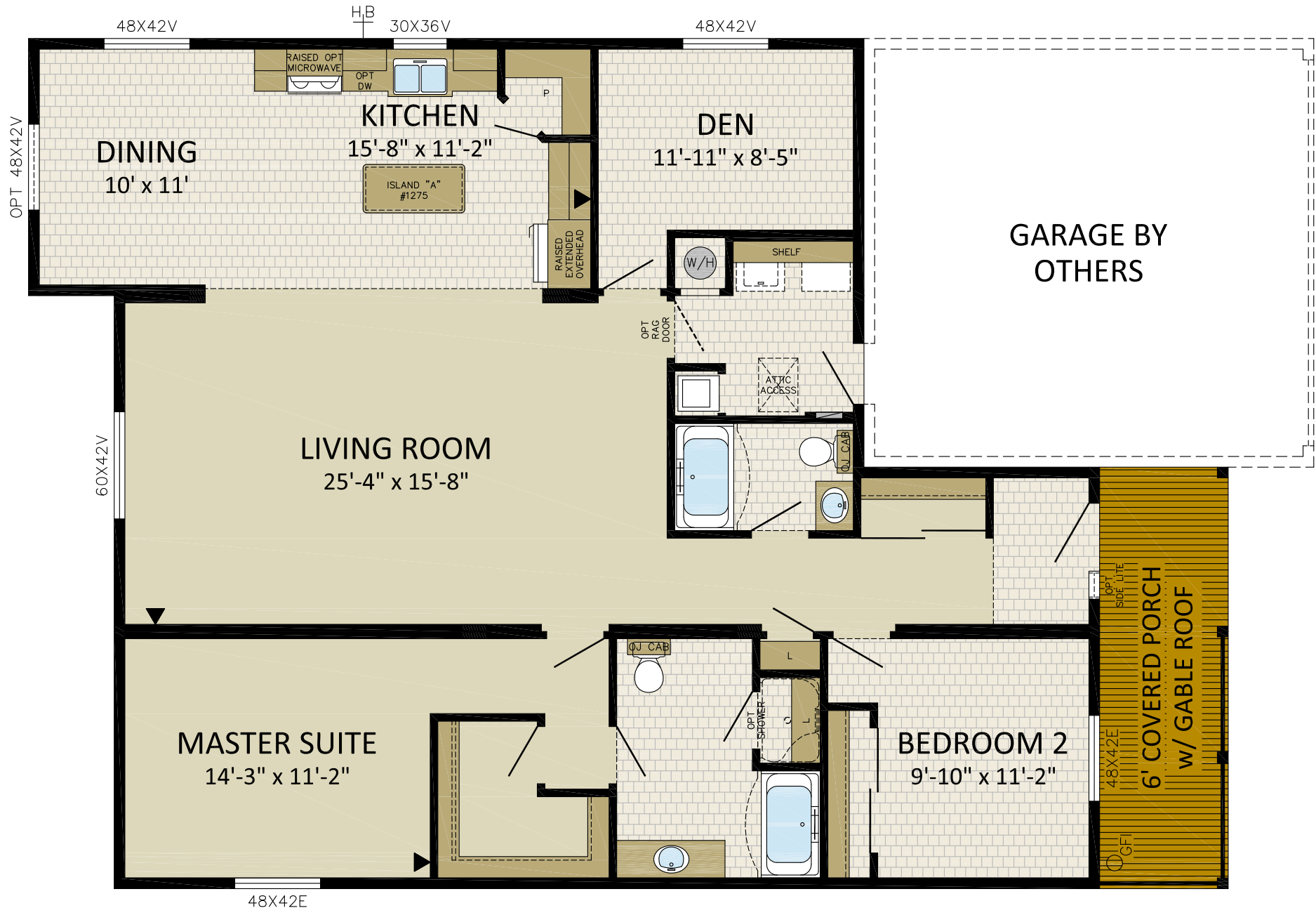
Model 40CO5002 above is shown with Options:

- *3/4 Star Light Exterior Door c/w 3/4 Star Light Side Light
- *Painted Shakes in Dormer
- * Shown with Wolfe Creek Windows
- * Stone by others



RAMSEY

2 BDRM, DEN, 2 BATH, COVERED PORCH
39'8"x39'/52' | 1770 sqft | 40CO5201





Model 40CO5201 above is shown with Options:

- *6/12 Roof Pitch
- *9'Sidewalls
- * Wolfe Creek Windows
- * Full Lite Exterior Doors c/w 2 Full Light Side Lights
- *Web and Painted Shakes in Dormers
- *Garage Built by Others





1175 Railway Street P:250-493-0122
Penticton, BC F:250-493-0133
V2A 5X5

Authorized Dealer:

DISCLAIMER:

Due to continuous product development and improvement, prices, specifications, and materials are subject to change without notice or obligation. Square footage and other dimensions are approximate. Included images are artist renderings and are not intended to be an accurate representation of the home. Renderings and floorplans may be shown with optional features or third-party additions.



Canadian
Home Builders'
Association

