

# *Pacific Cabins*



Scan on your Mobile Device  
to get your Digital Brochure



**Moduline**

Proudly Built in Canada  
[www.modulinepenticton.ca](http://www.modulinepenticton.ca)



# Moduline Manufactured Homes

## *Pacific Cabins*

Standard Features and Specifications Z241 Code

### GENERAL CONSTRUCTION

- 2x8 Floor Joist on 16" Center
- 5/8" T&G OSB Floor Decking
- 3/8" Exterior OSB Sheathing
- 15/32" Roof Decking
- Architectural Shingle Roof (30 yr. Warranty)
- Painted White Wooden Fascia
- 4/12 Engineered Roof Truss
- Maintenance-Free Vinyl Lap Siding
- 2" Fixed Sidewall Vented Eaves
- 12" Vented Eaves Front & Rear
- 6' Patio Entrance Door (Select Models)
- 36" Insulated Entrance Door (Most Models)
- Coach Light at Exterior Entrances
- Exterior GFI Electrical Outlet & Frost Free Tap
- 8' 2x6 Exterior Walls
- 2x4 Interior Walls
- Insulation: Roof R24, Floor R28, Wall R22
- Residential Double-Glazed Vinyl Windows c/w Low E Argon
- Steel Frame-No Axles

### TASTEFUL INTERIORS

- 2 - Double Coat Hooks by Entrance Door
- Quality Cushioned Vinyl Flooring Thru Out
- 2" Horizontal Blinds And Valances On All Windows (Except Baths)
- Vaulted Ceilings Throughout
- Décora Receptacles and Switches
- Coastal Hemlock Interior Doors
- Single Overhead Cabinet Above Deluxe Nightstand c/w receptacles-Most Models
- Wardrobe Closets-Most Models
- Textured Drywall Ceiling
- Vinyl Covered Drywall Panel Throughout
- Upgraded Coastal Hemlock Trim Throughout

### BRIGHT, BEAUTIFUL KITCHENS

- Ceramic Tile Backsplash
- 24x36V Window
- 30" Propane Range
- Exterior Vented Range Hood with Light
- 18 cu ft, 2-door, Frost-Free Refrigerator
- Stainless-Steel Kitchen Sink
- Chrome Single Lever Faucet c/w Pull Out Spout
- Doweled, Full Modular Cabinetry w/ Crown Moulding
- Water Shut-Off Valves
- Range & Fridge Cabinets (Select Models)

### SPACIOUS BATHS

- Ceramic Tile Backsplash
- Towel Bar & Ring
- Combination Tub/Shower w/ Single Lever Faucet or 48" shower(plan specific)
- GFI Receptacle
- Power Bath Fan on Separate Switch
- Bar Light over Vanity
- Framed Vanity Mirror

### UTILITY SERVICES

- Dehumistat Control
- 95% High Efficiency Propane Furnace c/w Electronic Ignition
- 30 Gallon Electric Hot Water Tank
- 50 Amp Electrical Service with 25' Cord
- Rear Propane Line w/Regulator
- Smoke/Carbon Monoxide Detector
- Heat Tape Plug
- Communication Outlet in LR
- Note: Select Models Do Not Have Fridge or Range
- \* Prep for Bar Fridge Only

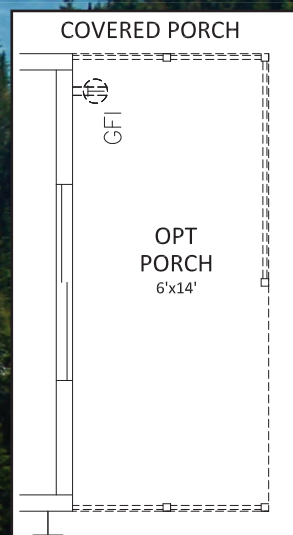
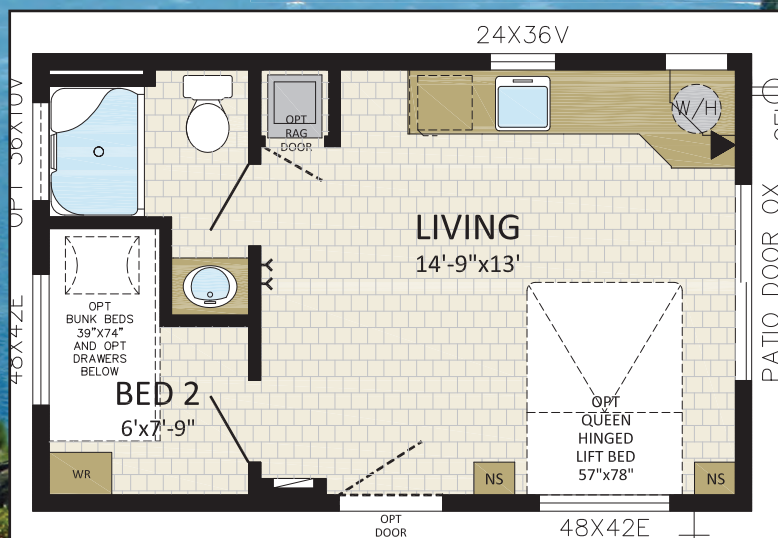
### Ten Year Warranty

Square footage and room sizes are approximate.  
Due to our policy of progressive product improvements, all prices and specifications are subject to change without notice.



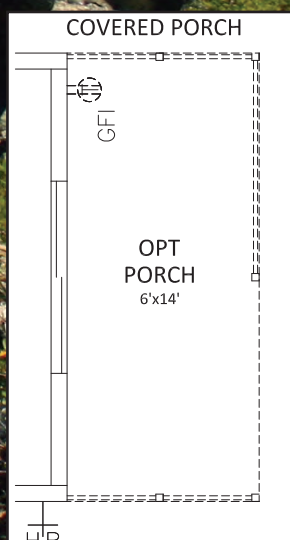
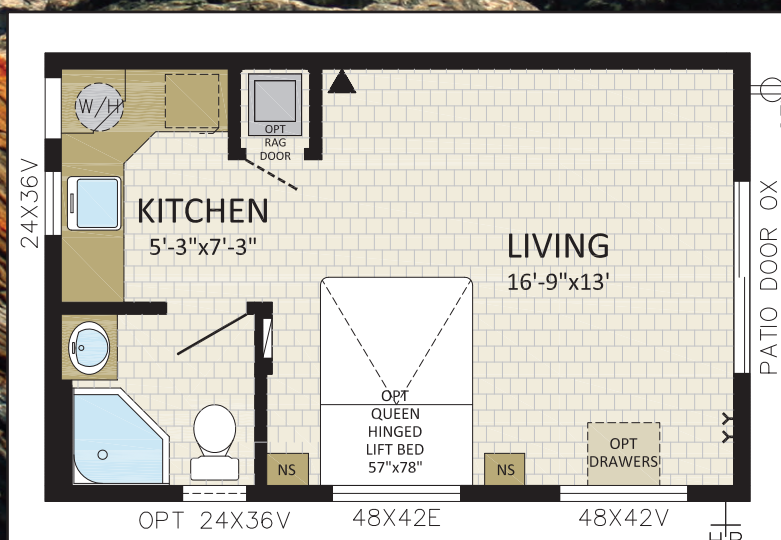
# Garibaldi

14'X 22' | 308 SQFT | 14712  
1 BDRM/STUDIO | 1 BATH | FRONT LR



# Elkhorn

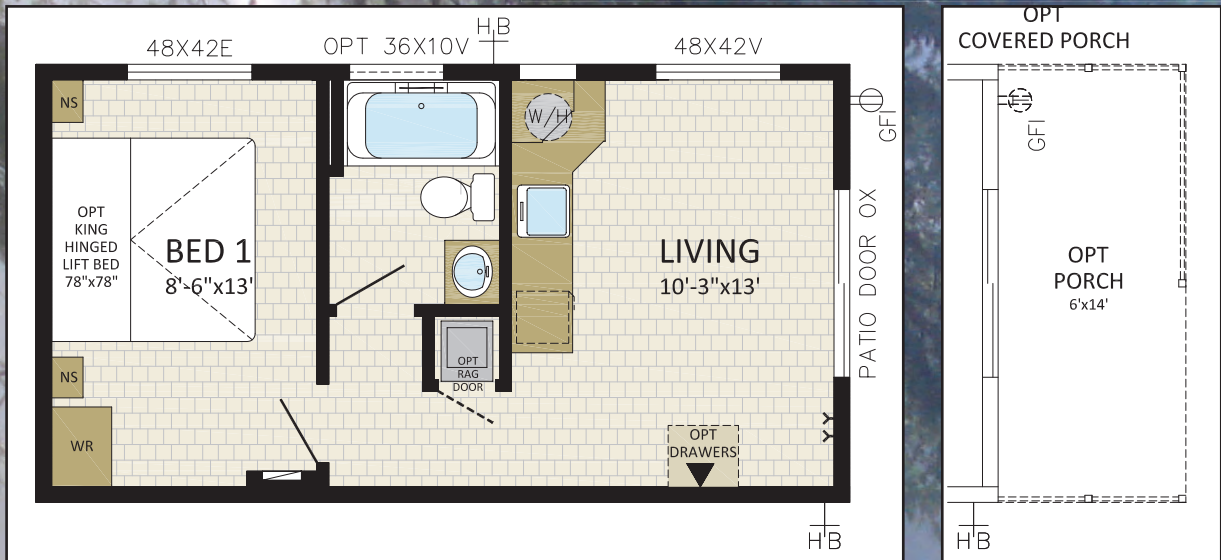
14'X 22' | 308 SQFT | 14722  
STUDIO | 1 BATH | FRONT LR





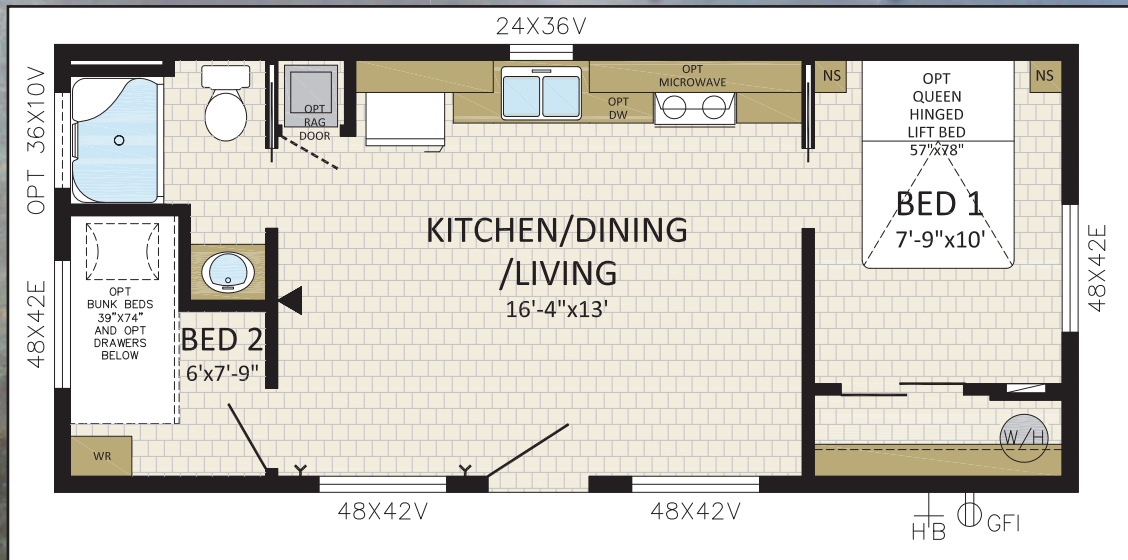
# Baker

**14'X 26' | 364 SQFT | 14726**  
**STUDIO | 1 BATH | FRONT LR**



# Robson

**14'X 32' | 448 SQFT | 14732**  
**2 BDRM | 1 BATH | FRONT BDRM**

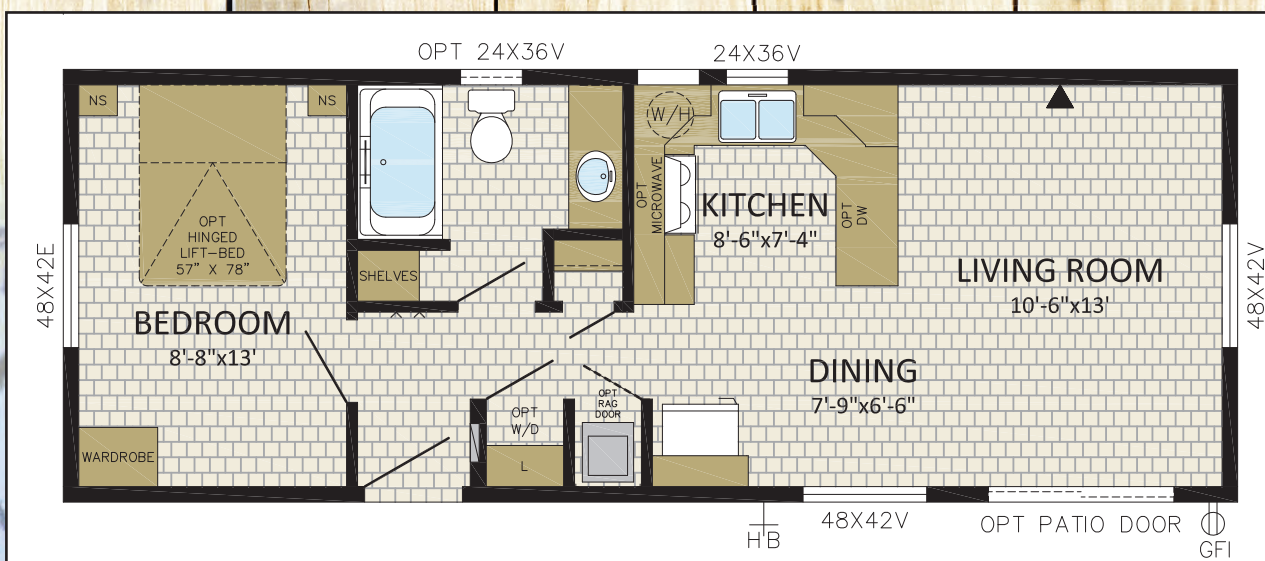




**NEW MODEL**

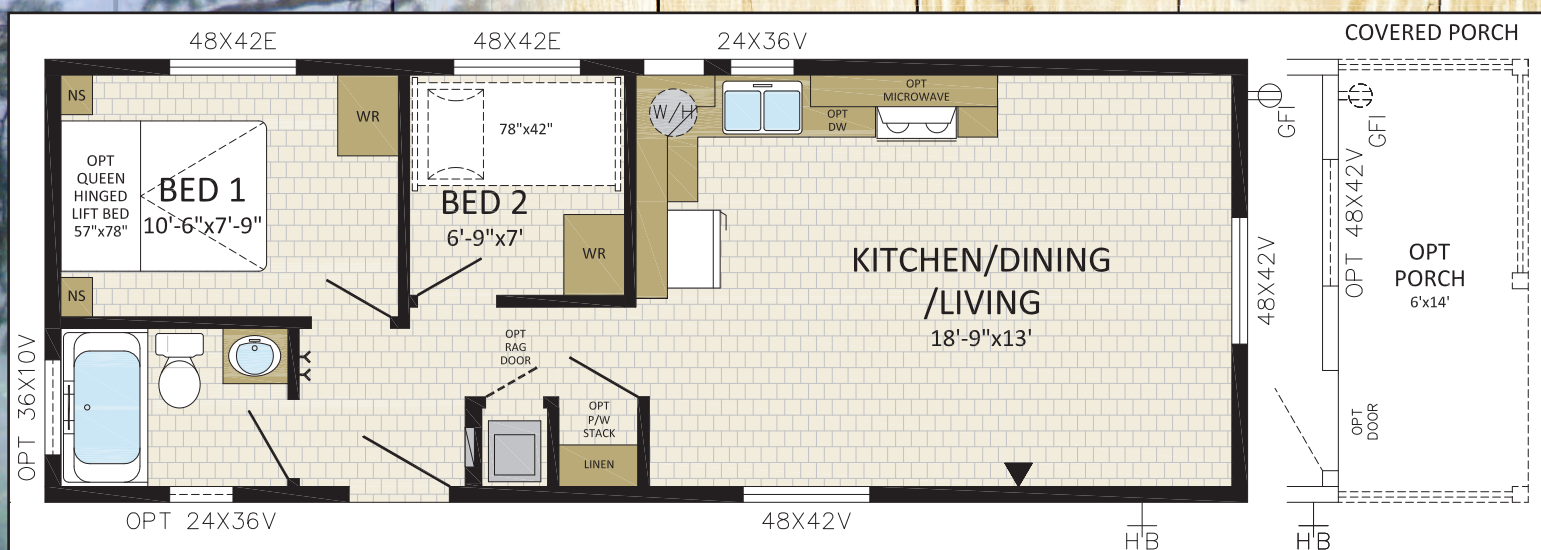
*Blackcomb*

**14'X 38' | 532 SQFT | 14736**  
**1 BDRM | 1 BATH | FRONT LR**



*Cascade*

**14'X 38' | 532 SQFT | 14737**  
**2 BDRM | 1 BATH | FRONT LR**

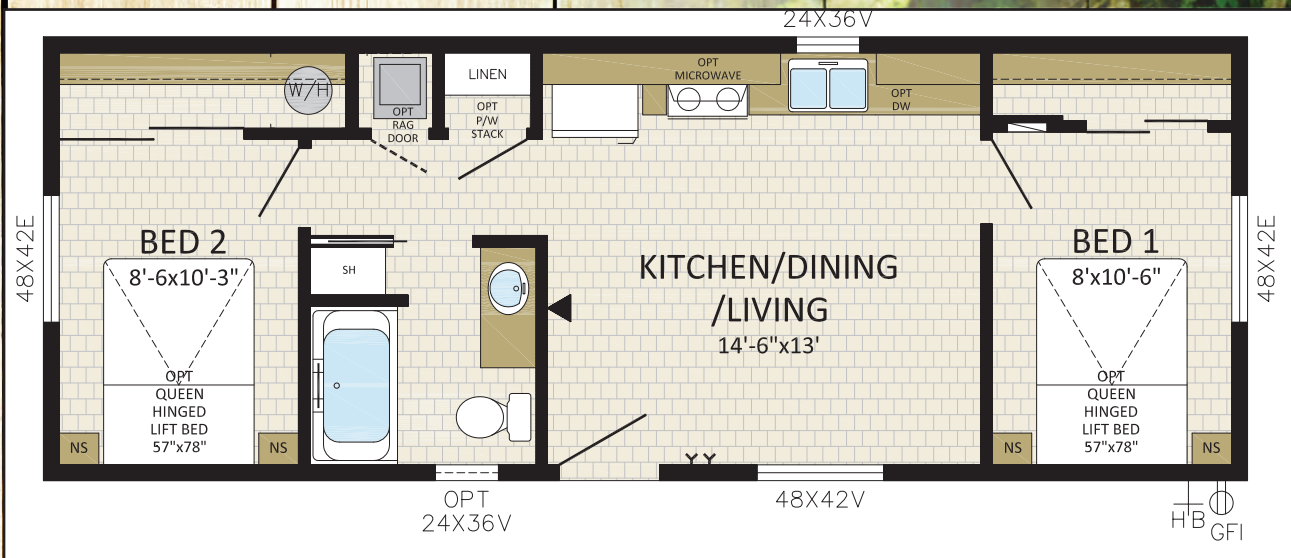






# Kootenay

14'X 38' | 532 SQFT | 14738  
2 BDRM | 1 BATH | FRONT BDRM



*Rendering Above is the Cascade 14737 Shown with Options:*

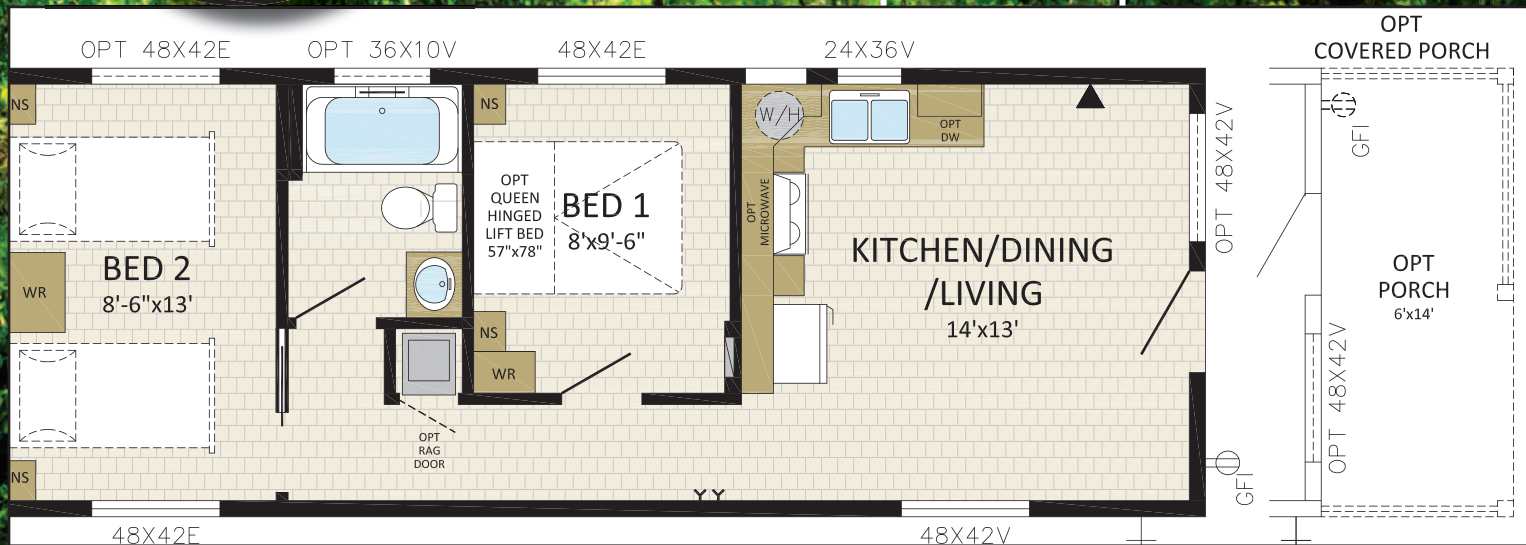
- \* 9 Lite Exterior Door
- \* OPT 6' Porch
- \* Black Soffit and Railing
- \* 2nd Porch Pot lite

[www.modulinepenticton.ca](http://www.modulinepenticton.ca)



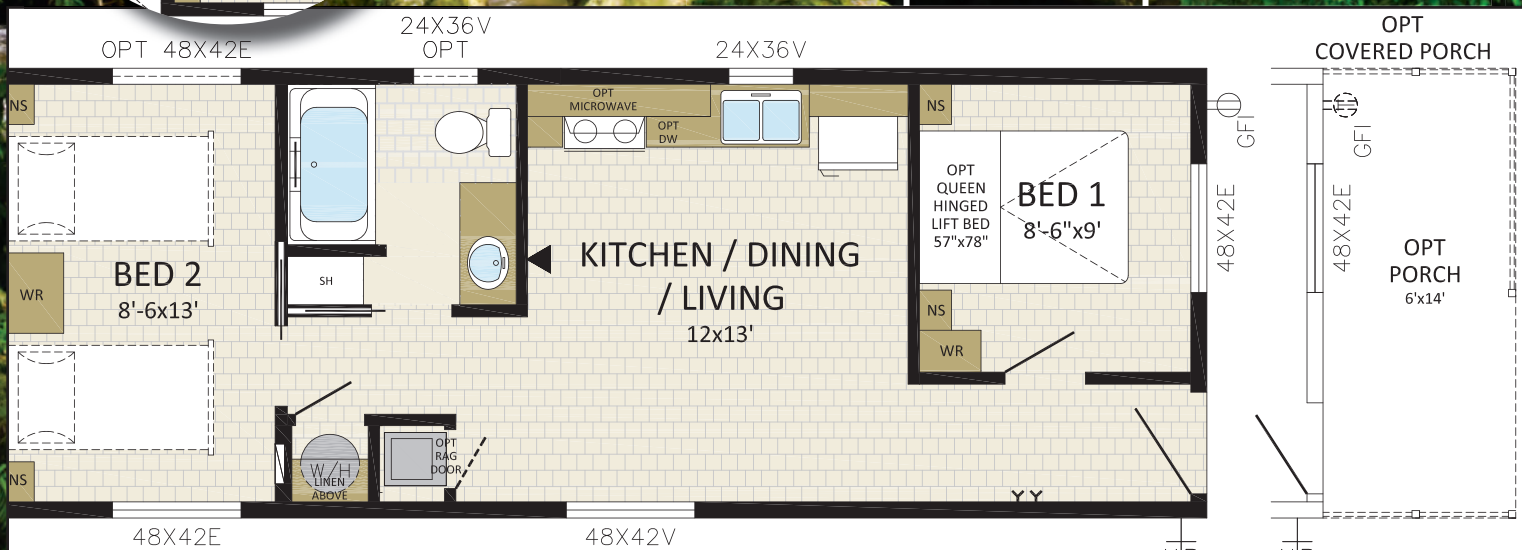
# Manning

14'X 38' | 532 SQFT | 14740  
2 BDRM | 1 BATH | FRONT LR/KIT



# Fairmont

14'X 38' | 532 SQFT | 14741  
2 BDRM | 1 BATH | FRONT BDRM







**1175 Railway Street  
Penticton, BC  
V2A 5X5  
P:250-493-0122  
F:250-493-0133**

**DISCLAIMER:**

Due to continuous product development and improvement, prices, specifications, and materials are subject to change without notice or obligation. Square footage and other dimensions are approximate. Included images are artist renderings and are not intended to be an accurate representation of the home. Renderings and floorplans may be shown with optional features or third-party additions.



Canadian  
Home Builders'  
Association

