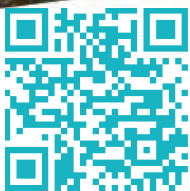




# *Pacific* Park Models



Scan on your Mobile Device  
to get your Digital Brochure



## **Moduline**



Proudly Built in Canada

[www.modulinepenticton.ca](http://www.modulinepenticton.ca)



# Moduline Manufactured Homes

## Pacific Park Models

### Standard Features and Specifications



#### GENERAL CONSTRUCTION

- Built to CSA Z-241
- No Axles
- 2x6 Floor Joist on 16" Center (2x8 Floor for 13' Wides)
- 5/8" T&G OSB Floor Decking
- 3/8" Exterior OSB Sheathing
- 15/32" Roof Decking
- 2x4 Exterior Walls 7' 6"
- 2x3 Interior Walls
- 7/12 Roof Pitch (5.5/12 Roof on 13' Wides)
- 5/12 Ceiling Pitch (3.5/12 on 13' Wides)
- 12" Fixed Perimeter Vented Eaves (6" on 13' Wides)
- Architectural Fiberglass Shingle Roof (30 yr. Warranty)
- Painted White Wooden Fascia
- Maintenance-Free Vinyl Lap Siding
- Residential Double-Glazed Vinyl Windows
- Residential Double-Glazed Patio Door
- Decorative Exterior Light at Entrances
- Exterior Frost Free Tap
- Exterior GFI Electrical Outlet
- Front Box Bay w/ Hip Roof & 72x76V Window
- Insulation: Roof R24, Floor R20, Wall R12

#### BRIGHT, BEAUTIFUL KITCHENS

- Ceramic Tile Backsplash
- Raised Range & Fridge Cabinets
- Pantry - Most Models
- Doweled, Full Modular Cabinetry w/ Crown Moulding
- 30" Propane Range
- Exterior Vented Range Hood with Light
- 18 cu ft, 2-door, Frost-Free Refrigerator
- Double Stainless-Steel Kitchen Sink
- Chrome Single Lever Faucet w/ Pull Out Spout

#### SPACIOUS BATHS

- Ceramic Tile Backsplash
- Obscure Bath Window
- Combination 60" Tub & Shower w/ Single Lever Faucet (Most Models)
- GFI Receptacle
- Power Bath Fan on Separate Switch
- Bar Light above Vanity
- Framed Vanity Mirror
- Vanity w/ Banjo Top

#### TASTEFUL INTERIORS

- Carpet in Owner's Suite
- Quality Cushioned Resilient Vinyl Flooring in all Other Areas
- 2" Horizontal Blinds on All Windows (Except Baths)
- Vaulted Ceilings Throughout
- Décora Receptacles and Switches
- Clermont Interior Doors
- Deluxe Night stands w/ Receptacles
- Owner's Suite Closet w Bypass Doors & 3 Drawer Dresser (Select Models)
- Upgraded Coastal Hemlock Trim Throughout
- Single Overhead Cabinet Above Deluxe Night stands
- Chrome Coat Hooks (3) (Select Models)

#### UTILITY SERVICES

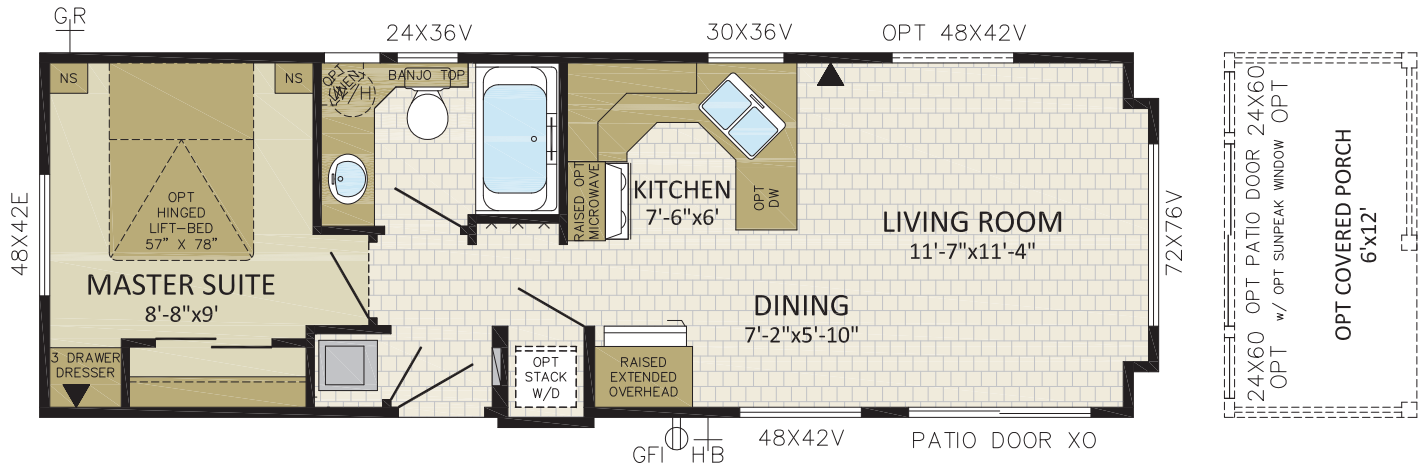
- Dehumidistat Control
- 95% High Efficiency Propane Furnace with Electronic Ignition
- 30 Gallon Electric Hot Water Tank
- 50 Amp Electrical Service with 25' Cord
- Rear Propane Line w/Roadside Regulator
- Smoke / Carbon Monoxide Detector
- Heat Tape Plug
- (2) Two Communication Outlets (LR & BR)
- Water Shut-Off Valves T/O

#### Ten Year Warranty

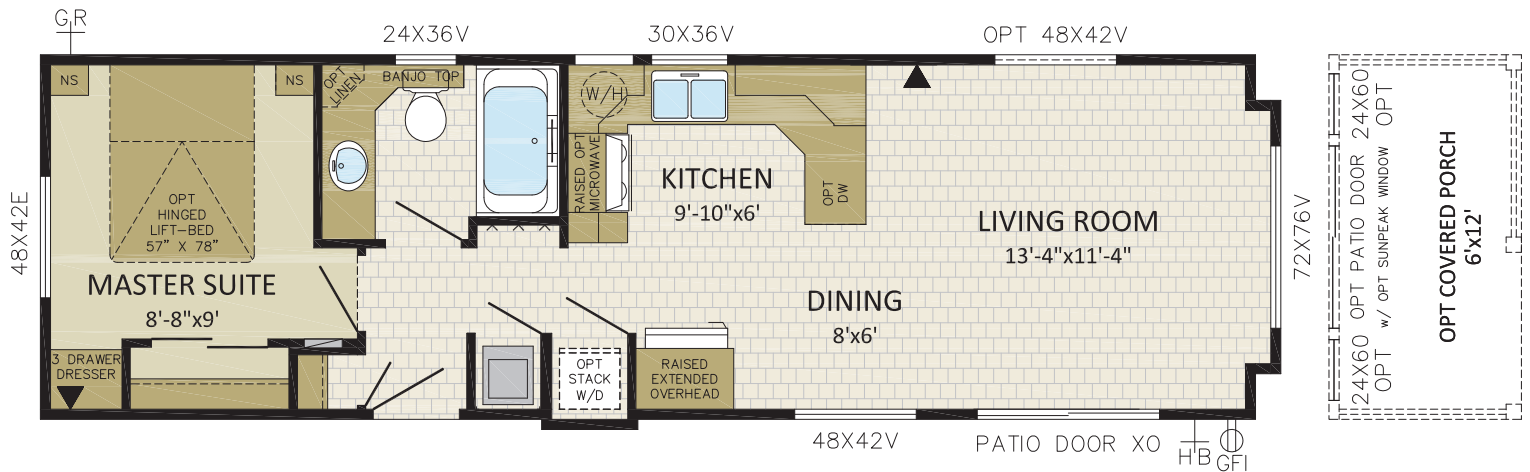
Square footage and room sizes are approximate.  
Due to our policy of progressive product improvements, all prices and specifications are subject to change without notice.

# 12' Wides

1 BDRM, 1 BATH, FRONT LR | 12'x36' | 440 sqft | 12PM36001



1 BDRM, 1 BATH, FRONT LR | 12'x40' | 488 sqft | 12PM40001

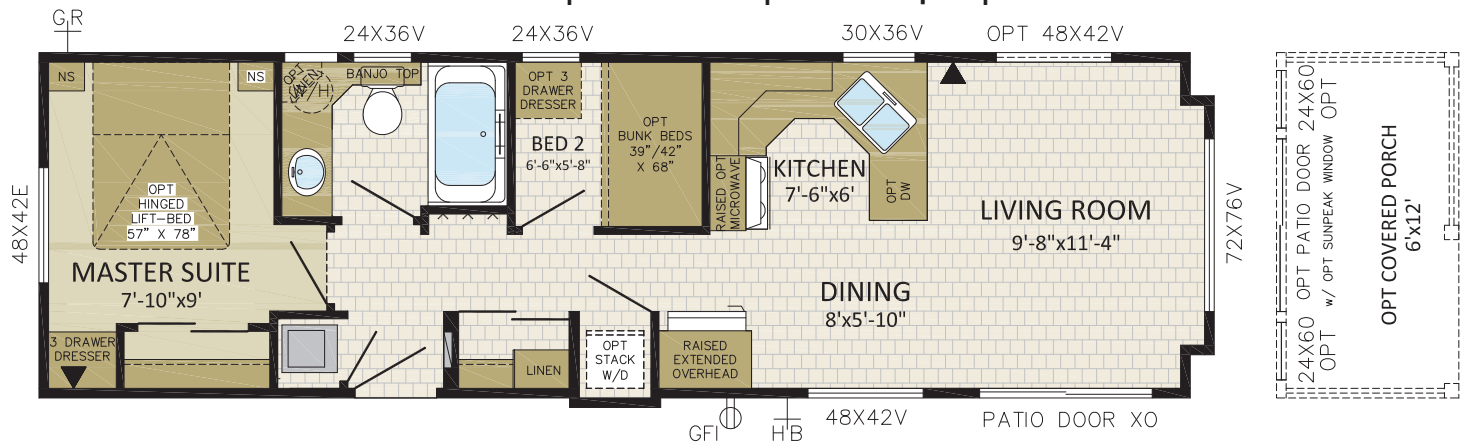


**Your Get-Away Cottage,  
With All The Comforts Of Home...**

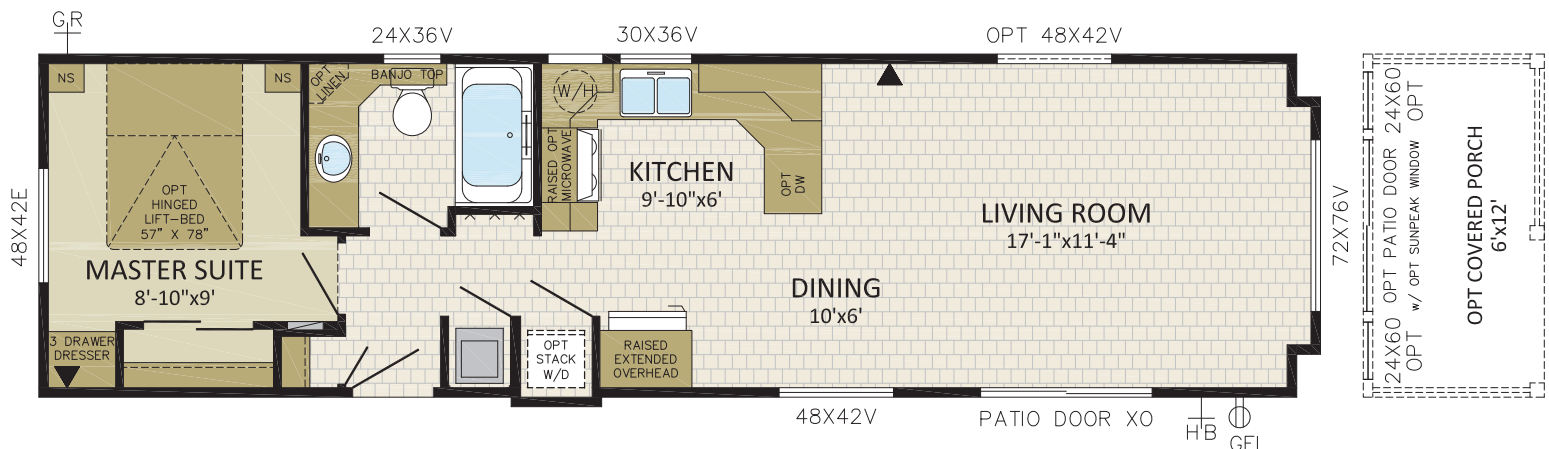




## 2 BDRM, 1 BATH, FRONT LR | 12'x40' | 488 sqft | 12PM40002

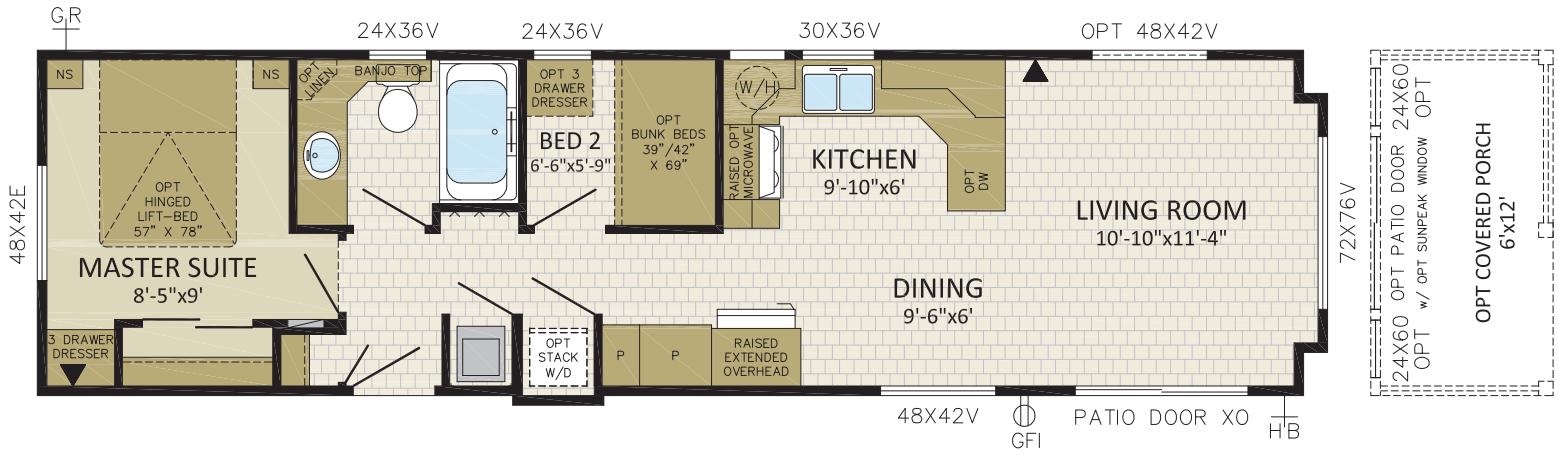


## 1 BDRM, 1 BATH, FRONT LR | 12'x44' | 536 sqft | 12PM44001





## 2 BDRM, 1 BATH, FRONT LR | 12'x44' | 536 sqft | 12PM44002



**GETTING AWAY** to your place at the lake or at the golf course should be as easy as getting in the car and just going. **PACIFIC PARK MODEL** homes from **MODULINE** make it more than easy; they make it an absolute delight!

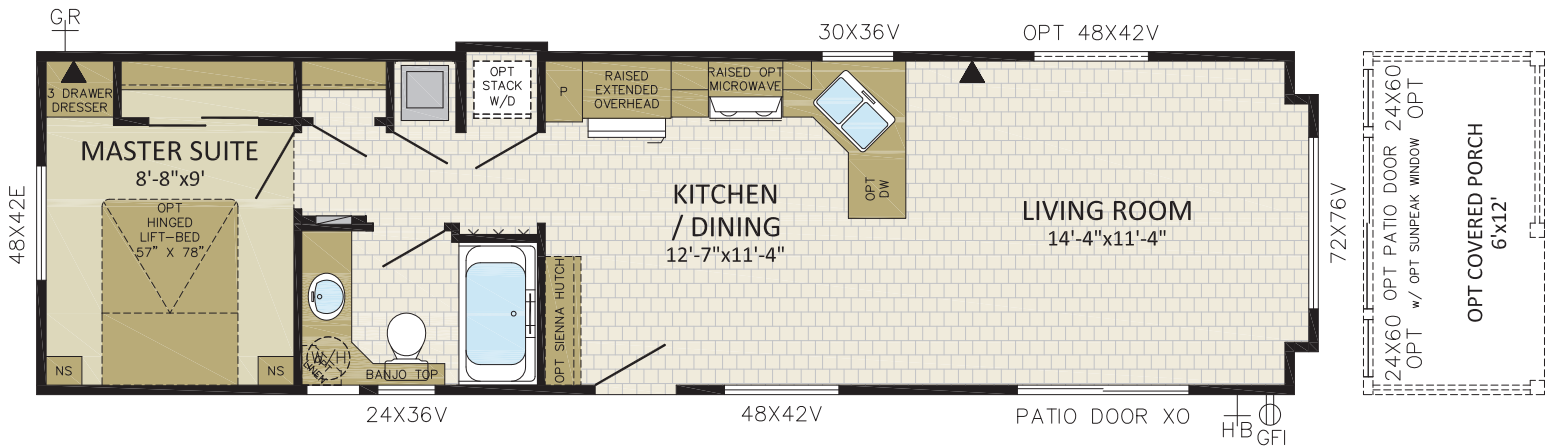
**RELAX IN STYLE** with homes that celebrate natural light and space with cathedral ceilings, panoramic bay windows and a refreshing open design concept.

You don't have to abandon comfort to **ENJOY** your get-away. With features like high quality cushioned vinyl floors, carpeted master bedroom, two-door refrigerator-freezer and 30" propane range, plus a wide range of available options and select features, you'll have **ALL THE COMFORTS** of home. Selected models even offer a second bedroom with optional bunk beds.

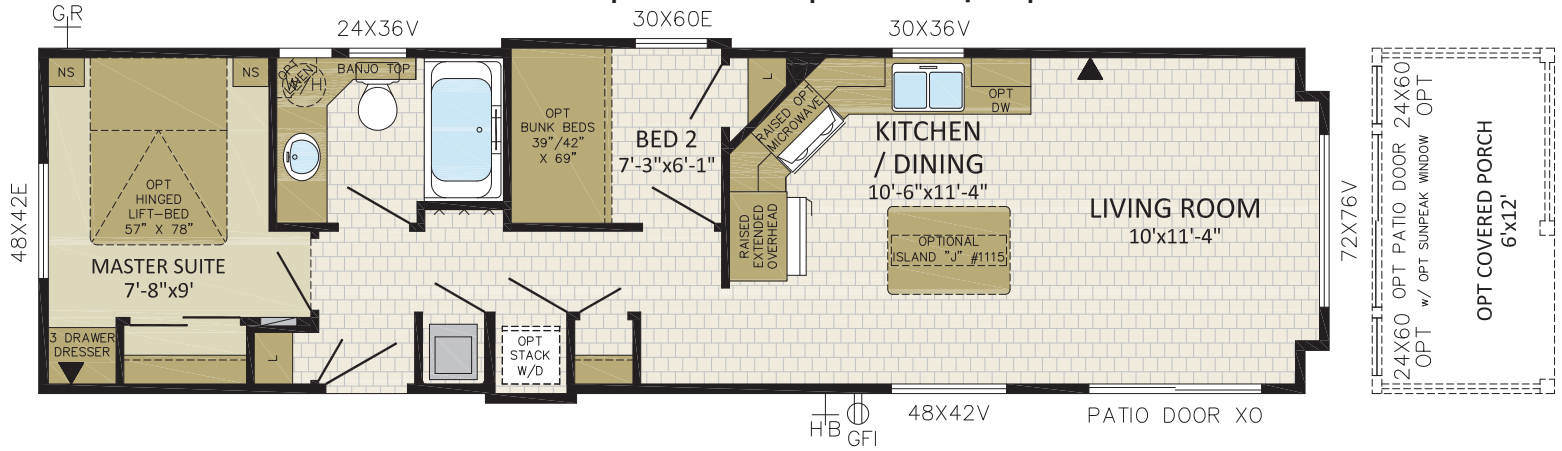




1 BDRM, 1 BATH, FRONT LR | 12'x44' | 536 sqft | 12PM44003

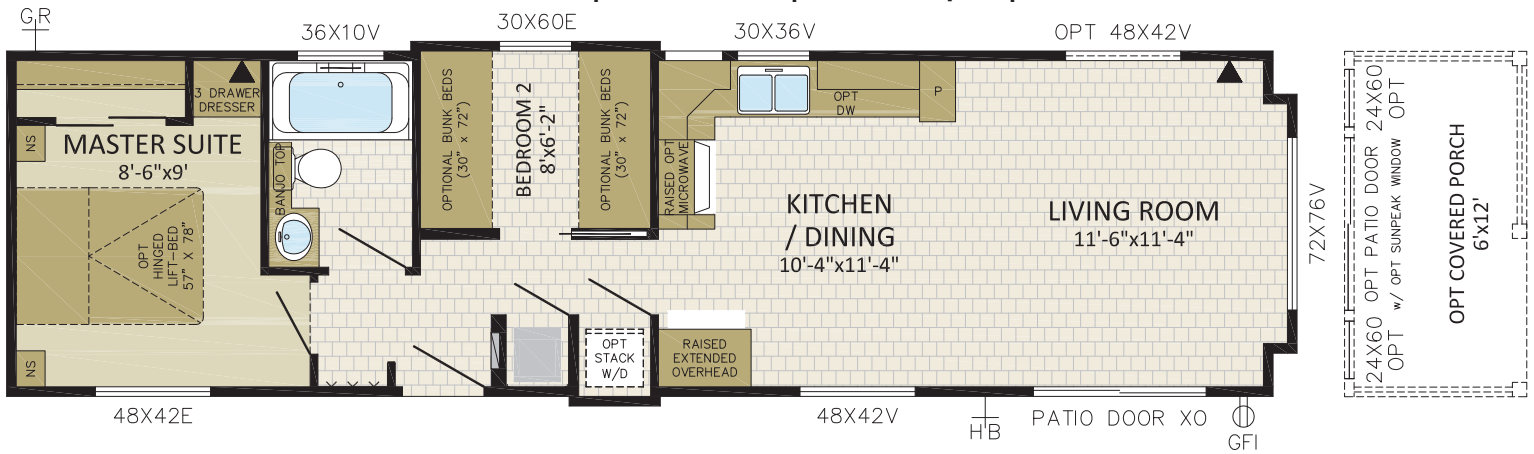


2 BDRM, 1 BATH, FRONT LR | 12'x44' | 536 sqft | 12PM44004

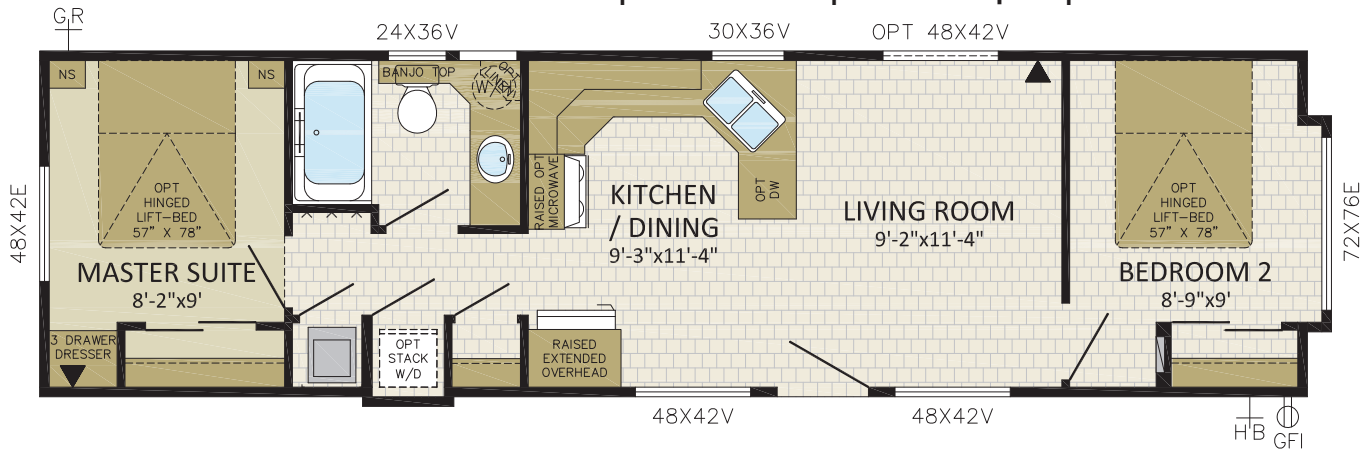




## 2 BDRM, 1 BATH, FRONT LR | 12'x44' | 536 sqft | 12PM44005



## 2 BDRM, 1 BATH, FRONT BDRM | 12'x44' | 536 sqft | 12PM44006



Shown with Optional:

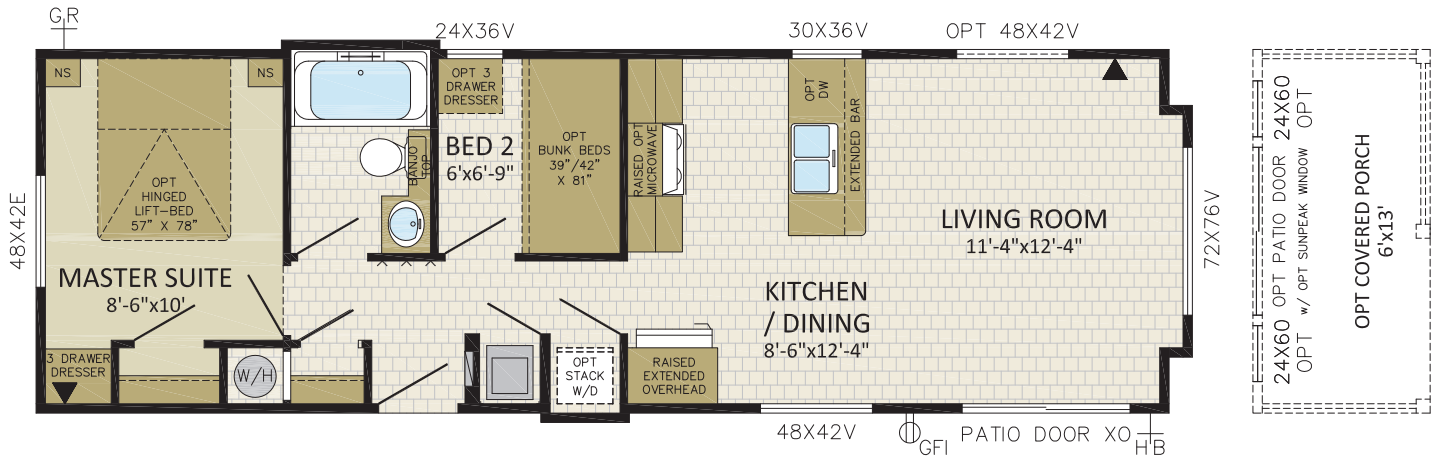
- \* Painted Fiber Cement Siding
- \* Corrugated Metal Siding
- \* Shed Dormer
- \* Full Lite Exterior Door
- \* Upgrade Windows & Transoms





# 13' Wides

2 BDRM, 1 BATH, GALLEY KITCHEN | 13'x40'6" | 536 sqft | 13PM40601

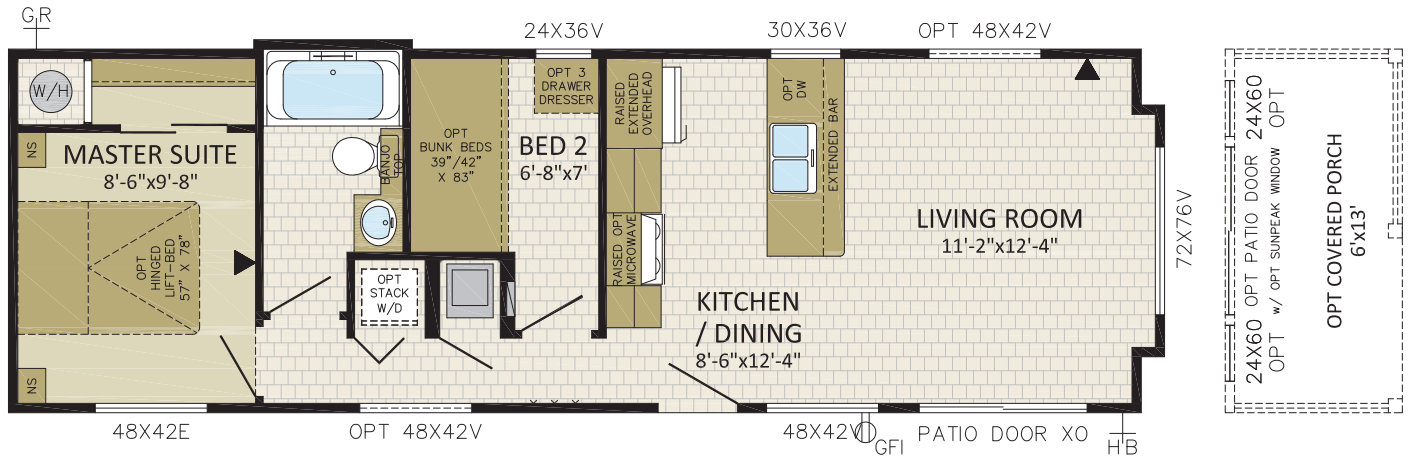


"After buying our vacation home we have all the room we need to spoil our grandchildren"



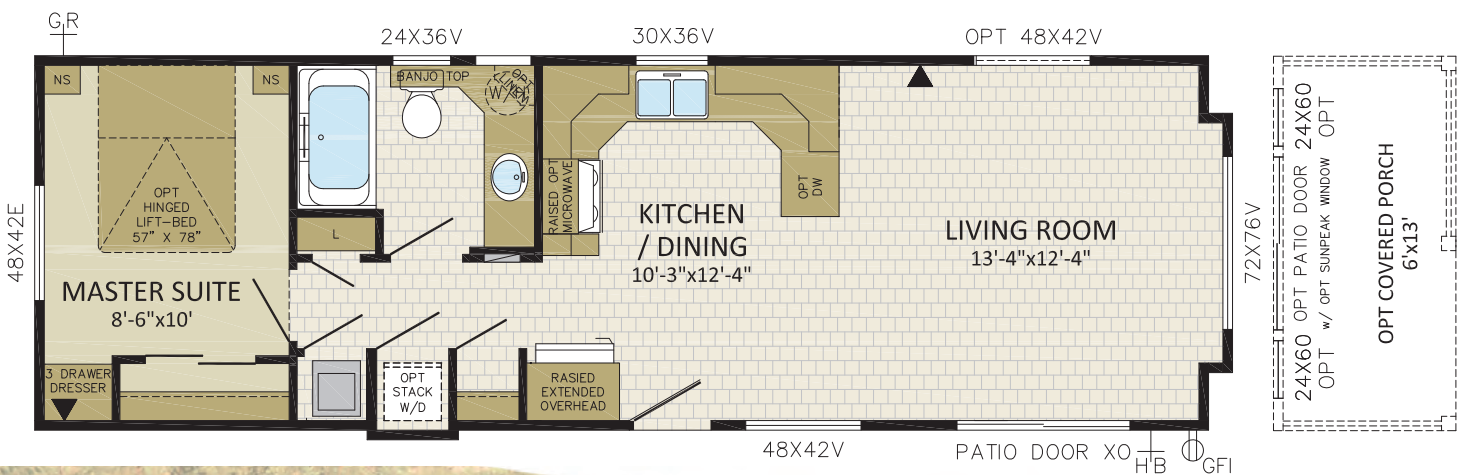


## 2 BDRM, 1 BATH, GALLEY KITCHEN | 13'x40'6" | 536 sqft | 13PM40602



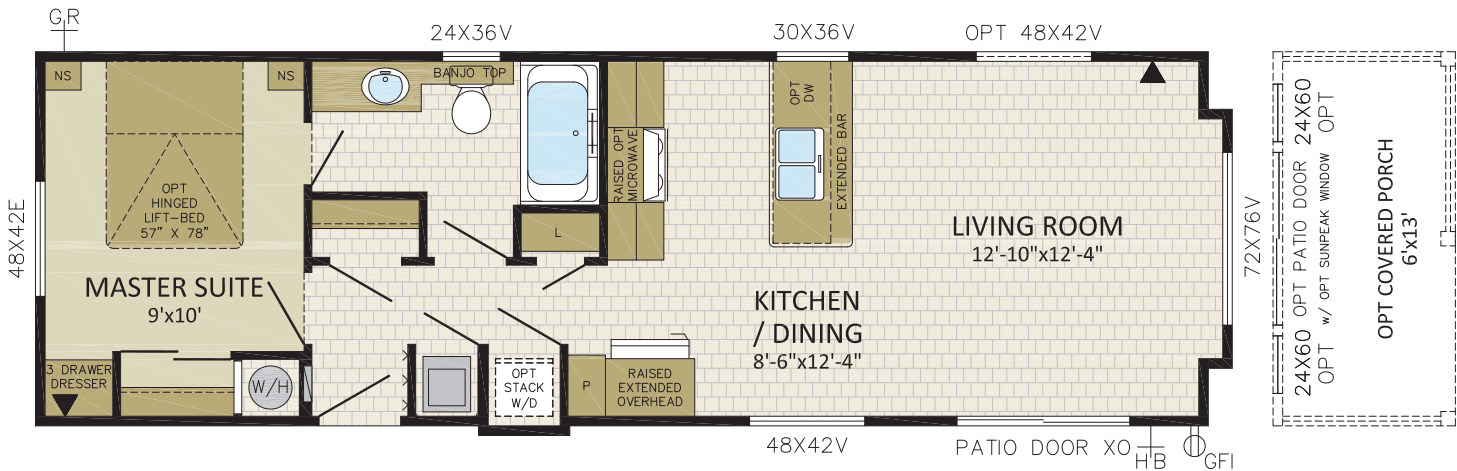
With stunning, bright interior spaces and smart floor plans to choose from, you can accessorize the Pacific Park Model to create a home that is uniquely yours, inside and out.

## 1 BDRM, 1 BATH, FRONT LR | 13'x40'9" | 538 sqft | 13PM40901





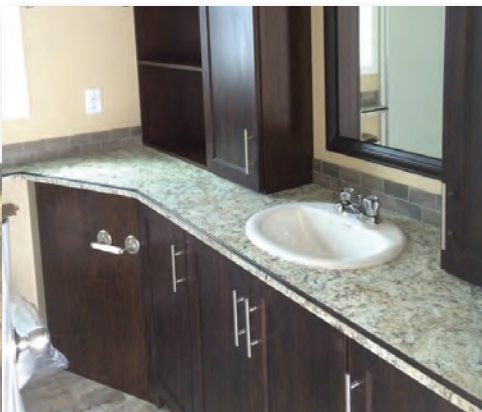
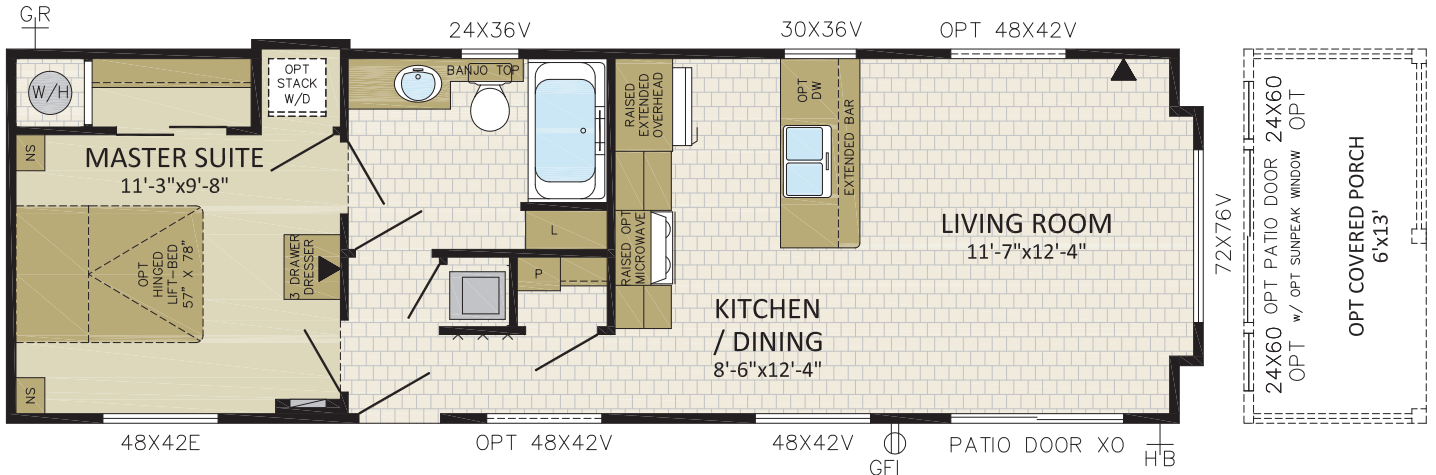
1 BDRM, 1 BATH, GALLEY KITCHEN | 13'x40'9" | 538 sqft | 13PM40902



Note:  
Echo Bay as shown in photo is for 12' model.



1 BDRM, 1 BATH, GALLEY KITCHEN | 13'x40'9" | 538 sqft | 13PM40903







# Moduline

Proudly Built in Canada

[www.modulinepenticton.ca](http://www.modulinepenticton.ca)

1175 Railway Street  
Penticton, BC  
V2A 5X5

P:250-493-0122  
F:250-493-0133



a proud supporter of  
Ronald McDonald House

Authorized Dealer:

#### DISCLAIMER:

Due to continuous product development and improvement, prices, specifications, and materials are subject to change without notice or obligation. Square footage and other dimensions are approximate. Included images are artist renderings and are not intended to be an accurate representation of the home. Renderings and floor plans may be shown with optional features or third-party additions.



1000/10/19